

TEST REPORT

The Intertek logo consists of the word "Intertek" in a white, sans-serif font, centered within a dark blue rounded rectangular background.

REPORT NUMBER: G100463637MID-005
REPORT DATE: October 26, 2011
REVISED REPORT DATE: November 8, 2011
REVISED REPORT DATE: November 14, 2011

EVALUATION CENTER
Intertek Testing Services NA Inc.
8431 Murphy Drive
Middleton, WI 53562

RENDERED TO

Dectra Corporation
3425 33rd Avenue, NE
Saint Anthony, MN 55418

PRODUCT EVALUATED:

Model WHS2000 Solid Fuel Hydronic Furnace

Report of Testing Model WHS2000 Solid Fuel Hydronic Heater for compliance with the applicable requirements of the following criteria: Appendix X1 Modified test method for wood-fired hydronic appliances that utilize thermal storage of ASTM E2618-09 Measurement of particulate emissions and heating efficiency of outdoor solid fuel-fired hydronic heating appliances.

This report is for the exclusive use of Intertek's Client and is provided pursuant to the agreement between Intertek and its Client. Intertek's responsibility and liability are limited to the terms and conditions of the agreement. Intertek assumes no liability to any party, other than to the Client in accordance with the agreement, for any loss, expense or damage occasioned by the use of this report. Only the Client is authorized to copy or distribute this report and then only in its entirety. Any use of the Intertek name or one of its marks for the sale or advertisement of the tested material, product or service must first be approved in writing by Intertek. The observations and test results in this report are relevant only to the sample tested. This report by itself does not imply that the material, product, or service is or has ever been under an Intertek certification program.

TABLE OF CONTENTS

I. INTRODUCTION 4
I.A. GENERAL..... 4
I.B. TEST UNIT DESCRIPTION 4
I.C. RESULTS 4
I.D. PRETEST INFORMATION 4

II. SUMMARY OF TEST RESULTS..... 5
II.A EPA RESULTS 5
II.B 8-HR HEAT OUTPUT & EFFICIENCY RATINGS..... 6
II.C YEAR ROUND USE WEIGHTING 6
II.D SUMMARY OF OTHER DATA 7

III. PROCESS DESCRIPTION 8
III.A DISCUSSION 8
III.B UNIT DIMENSIONS..... 8
III.C AIR SUPPLY SYSTEM 8
III.D OPERATION DURING TEST 8
III.E TEST FUEL PROPERTIES 9
III.F START UP OPERATION 9

IV. SAMPLING SYSTEM 9
IV.A SAMPLING LOCATIONS..... 9
IV.A.1 DILUTION TUNNEL..... 10
IV.B. OPERATIONAL DRAWINGS..... 11
IV.B.2 DILUTION TUNNEL SAMPLE SYSTEM..... 11

V. SAMPLING METHODS 12
V.A. PARTICULATE SAMPLING..... 12

VI. QUALITY ASSURANCE 12
VI.A. INSTRUMENT CALIBRATION 12
VI.A.1 DRY GAS METERS..... 12
VI.A.2 STACK SAMPLE ROTAMETER 13
VI.B. TEST METHOD PROCEDURES 13
VI.B.1 LEAK CHECK PROCEDURES 13
VI.B.2 TUNNEL VELOCITY/FLOW MEASUREMENT 13
VI.B.3 PM SAMPLING PROPORTIONALITY 13

VII. RESULTS & OBSERVATIONS 13

APPENDICES

Laboratory Operating Procedure A
Data and Calculation Forms B
Calibration Documents C
Unit Drawings and Installation Manual D
Dry Gas Meter Calibration Data..... E
Unit Preburn Documentation F

REVISION SUMMARY

| DATE | SUMMARY |
|-------------------|--|
| November 8, 2011 | Added explanation for models WHS2000H and WHS2000V to section VII. |
| November 14, 2011 | Added corrected data to tables in section II. |

I. INTRODUCTION

I.A. GENERAL

From October 3, 2011 to October 6, 2011 Intertek Testing Services NA Inc. (Intertek) conducted tests on the WHS2000 Solid Fuel Hydronic Heater to determine emission and efficiency results for Dectra Corporation.

Tests were conducted by Ken Slater at the Dectra Corporation facility located at 1162 Red Fox Road, Arden Hills, Minnesota. Tests were evaluated to the Appendix X1 Modified test method for wood-fired hydronic appliances that utilize thermal storage for ASTM E2618-09 Standard Test Method for Measurement of Particulate Emissions and Heating Efficiency of Outdoor Solid Fuel-Fired Hydronic Heating Appliances.

I.B. TEST UNIT DESCRIPTION

The model WHS2000 is a solid fueled unit with a 14.15 cubic foot firebox constructed of carbon sheet steel, and weighs 3574 lbs. dry. The heat exchanger extends through the water vessel, which holds 15588 lbs. of water.

I.C. RESULTS

The unit as tested produced an average emissions rate of:
0.087 lbs/million Btu of output for the heating season
0.088 lbs/million Btu of output for year round

I.D. PRETEST INFORMATION

The unit was inspected upon arrival at the Dectra Corporation facility and found to be in good condition. The unit was set up per the manufacturer's instructions. The unit was placed on the test stand and instrumented with thermocouples in the specified locations. The chimney system and laboratory dilution tunnel was cleaned using standard wire brush chimney cleaning equipment.

On October 3, 2011 the unit was ready for testing.

II. SUMMARY OF TEST RESULTS

II.A EPA Results

**Table 1A. Data Summary
 Part A**

| Category | Load % Capacity | Target Load | Actual Load | Actual Load | ⊖ | W _{fuel} | MC _{ave} | Q _{in} | Q _{out} |
|----------|-----------------|-------------|-------------|-------------|---------------|----------------------|-------------------|-----------------|------------------|
| | | | | | Test Duration | Wood Weight as-fired | Wood Moisture | Heat Input | Heat Output |
| | | Btu/hr | Btu/hr | % of Max | hrs | lb | % DB | Btu | Btu |
| I | 15% of Max | 30,000 | 30,000 | 15% | 25.6 | 128.4 | 23.60 | 1,098,058 | 822,451 |
| II | 20% of Max | 40,000 | 40,000 | 20% | 19.4 | 128.4 | 23.60 | 1,098,058 | 831,449 |
| III | 37.5% of max | 75,000 | 75,000 | 37.5% | 10.5 | 128.4 | 23.60 | 1,098,058 | 844,383 |
| IV | Max capacity | 200,000 | 200,000 | 100% | 4.0 | 128.4 | 23.60 | 1,098,058 | 853,870 |

Table 1B. Data Summary Part B

| Category | Load % Capacity | E _T | E | E | E _{g/hr} | E _{g/kg} | η _{del} |
|----------|-----------------|--------------------|-----------------|-----------------|-------------------|-------------------|--------------------------|
| | | Total PM Emissions | PM Output Based | PM Output Based | PM Rate | PM Factor | Delivered Efficiency HHV |
| | | g | lb/mmBtu Out | g/MJ | g/hr | g/kg | % |
| I | 15% of Max | 26.0 | 0.089 | 0.030 | 0.95 | 0.447 | 74.90% |
| II | 16-24% of Max | 26.0 | 0.088 | 0.030 | 1.25 | 0.447 | 75.72% |
| III | 25-50% of max | 26.0 | 0.087 | 0.029 | 2.31 | 0.447 | 76.90% |
| IV | Max capacity | 26.0 | 0.086 | 0.029 | 6.10 | 0.447 | 77.76% |

II.B 8-Hour Heat Output and Efficiency Ratings

Table 1C: Hang Tag Information

| | | | |
|----------------------------|------------------|--------------|-------------------------------------|
| MANUFACTURER: | Dectra | | |
| MODEL NUMBER: | WHS2000 | | |
| 8-HOUR OUTPUT RATING: | $Q_{out-8hr}$ | 106,109 | Btu/hr |
| 8-HOUR AVERAGE EFFICIENCY: | $\eta_{avg-8hr}$ | 77.3% | (Using higher heating value) |
| | | 88.4% | (using lower heating value) |
| ANNUAL EFFICIENCY RATING: | η_{avg} | 75.8% | (Using higher heating value) |
| | | 86.7% | (using lower heating value) |
| PARTICULATE EMISSIONS: | E_{avg} | 1.65 | GRAMS/HR (average) |
| | | 0.088 | LBS/MILLION Btu OUTPUT |

II.C Summary of other Data

Table 2. Year Round Use Weighting

| Category | Weighting Factor | $\eta_{del,i} \times F_i$ - HHV | $\eta_{del,i} \times F_i$ - LHV | $E_{g/MJ,i} \times F_i$ | $E_{g/kg,i} \times F_i$ | $E_{lb/mmbtu,i} \times F_i$ | $E_{g/hr,i} \times F_i$ |
|---------------|------------------|------------------------------------|------------------------------------|-------------------------|-------------------------|-----------------------------|-------------------------|
| I | 0.437 | 0.327 | 0.374 | 0.013 | 0.195 | 0.039 | 0.415 |
| II | 0.238 | 0.180 | 0.206 | 0.007 | 0.106 | 0.021 | 0.298 |
| III | 0.275 | 0.211 | 0.242 | 0.008 | 0.123 | 0.024 | 0.635 |
| IV | 0.050 | 0.039 | 0.044 | 0.001 | 0.022 | 0.004 | 0.305 |
| Totals | 1.000 | 75.8% | 86.7% | 0.030 | 0.447 | 0.088 | 1.653 |

II.D Summary of other Data

| | Run 2 | Run 3 | Run 4 | Standby | Units |
|--------------------------|-----------|-----------|-----------|---------|-----------------|
| Steel Mass | 3574 | 3574 | 3574 | 3574 | lbs |
| Water Mass | 15588 | 15588 | 15588 | 15588 | lbs |
| Fuel Load Weight | 156.69 | 153.37 | 159.79 | | lbs |
| Fuel MC (dry basis) | 24.56 | 23.02 | 23.24 | | % |
| Kindling Mass | 1.85 | 1.95 | 1.87 | | lbs |
| Kindling MC (dry basis) | 10 | 10 | 10 | | % |
| Starting system temp. | 120.28 | 125.64 | 124.70 | 172.20 | F |
| Ending System Temp. | 172.20 | 179.6 | 180.50 | 169.20 | F |
| Average Room Temp. | 75.94 | 79.06 | 78.53 | 77.21 | |
| Burn Time | 162 | 166 | 171 | | Minutes |
| Burn Time | 2.70 | 2.77 | 2.85 | | Hours |
| Standby Test Duration | | | | 18 | Hours |
| HHV | 8550 | 8550 | 8550 | | BTU/lb |
| Dry Fuel Weight | 58 | 57 | 60 | | Kg |
| Burn Rate | 21.42 | 20.74 | 20.91 | | Kg/hr |
| Input | 1,089,965 | 1,081,122 | 1,123,087 | | BTU |
| Heat Stored | 828,952 | 860,486 | 889,753 | | BTU |
| Average | 828,952 | 860,486 | 889,753 | | |
| Standby Loss Rate | | | | 16.0 | BTU/hr-F |
| Total Emissions | 25.291 | 20.147 | 32.674 | | Grams |
| Total Emissions | 0.056 | 0.044 | 0.072 | | lbs |
| Category I Output Rate | 30000 | 30000 | 30000 | 1357 | BTU/hr |
| Category II Output Rate | 40000 | 40000 | 40000 | 1357 | BTU/hr |
| Category III Output Rate | 75000 | 75000 | 75000 | 1357 | BTU/hr |
| Category IV Output Rate | 200000 | 200000 | 200000 | 1357 | BTU/hr |
| | | | | Average | |
| Output Time Cat I | 26.4 | 27.4 | 28.4 | 27.4 | Hours |
| Output Time Cat II | 20.0 | 20.8 | 21.5 | 20.8 | Hours |
| Output Time Cat III | 10.9 | 11.3 | 11.7 | 11.3 | Hours |
| Output Time Cat IV | 4.1 | 4.3 | 4.4 | 4.3 | Hours |
| | | | | Average | |
| Category I Efficiency | 72.8% | 76.1% | 75.8% | 74.9% | |
| Category II Efficiency | 73.6% | 77.0% | 76.6% | 75.7% | |
| Category III Efficiency | 74.7% | 78.2% | 77.8% | 76.9% | |
| Category IV Efficiency | 75.5% | 79.1% | 78.7% | 77.8% | |
| Category I Emissions | 0.092 | 0.068 | 0.107 | 0.089 | lb/mmBTU output |
| Category II Emissions | 0.091 | 0.067 | 0.106 | 0.088 | lb/mmBTU output |
| Category III Emissions | 0.090 | 0.066 | 0.104 | 0.087 | lb/mmBTU output |
| Category IV Emissions | 0.089 | 0.065 | 0.103 | 0.086 | lb/mmBTU output |

III. PROCESS DESCRIPTION

III.A. DISCUSSION

RUN #1 (October 3, 2011). The starting temperature in the heat storage vessel was 120°F. Burn time was 2.70 hours and ended with a heat storage vessel temperature of 171°F.

RUN #2 (October 4, 2011). The starting temperature in the heat storage vessel was 126°F. Burn time was 2.77 hours and ended with a heat storage vessel temperature of 176°F.

RUN #3 (October 5, 2011). The starting temperature in the heat storage vessel was 120°F. Burn time was 2.85 hours and ended with a heat storage vessel temperature of 170°F.

III.B. UNIT DIMENSIONS

Overall dimensions are 71.75-in wide, 122.5-in deep, 76.75-in high.

III.C. AIR SUPPLY SYSTEM

Combustion air enters from a fresh air intake located on the rear of the unit. The air travels to a collar in the front of the unit where it enters the firebox via primary and secondary combustion air nozzles. The movement of combustion air is aided by a constant 3600 RPM induced-draft combustion air blower. Combustion products flow through a heat exchanger system before exiting through a 6-in flue collar located at the top back of the outer enclosure. Combustion air is terminated by an electronic digital controller. The controller compares the flue and water temperatures until they fall to within 5 °F of each other. The blower is then turned off and combustion air is terminated.

III.D. OPERATION DURING TEST

The boiler is operated until the entire fuel load is consumed and there is no further combustion in the firebox. The end of the test is determined when the water storage temperature is no longer increasing.

III.E. TEST FUEL PROPERTIES

The fuel used was Quercus Ruba L. (Oak, Red). The fuel was split cordwood with dimensions around 4-in thick x 4-in long x 16-in in length. The fuel was dried to average moisture content between 19% and 25% on a dry basis.

III.F. START-UP OPERATION

The cordwood fuel started with newspaper and a measured kindling load. As the test load was being lit, the sampling system was started simultaneously. The unit was allowed to operate until all combustion in the firebox had ceased.

IV. SAMPLING SYSTEMS

The ASTM E2515-09 sampling procedure was used.

IV.A. SAMPLING LOCATIONS

Particulate samples are collected from the dilution tunnel at a point 16 feet from the tunnel entrance. The tunnel has two elbows ahead of the sampling section. (See Figure 3.) The sampling section is a continuous 14-foot section of 10-inch diameter pipe straight over its entire length. Tunnel velocity pressure is determined by a standard Pitot tube located 96 inches from the beginning of the sampling section. The dry bulb thermocouple is located six inches downstream from the Pitot tube. Tunnel samplers are located 36 inches downstream of the Pitot tube and 36 inches upstream from the end of this section. (See Figure 1.)

IV.A.(1) DILUTION TUNNEL

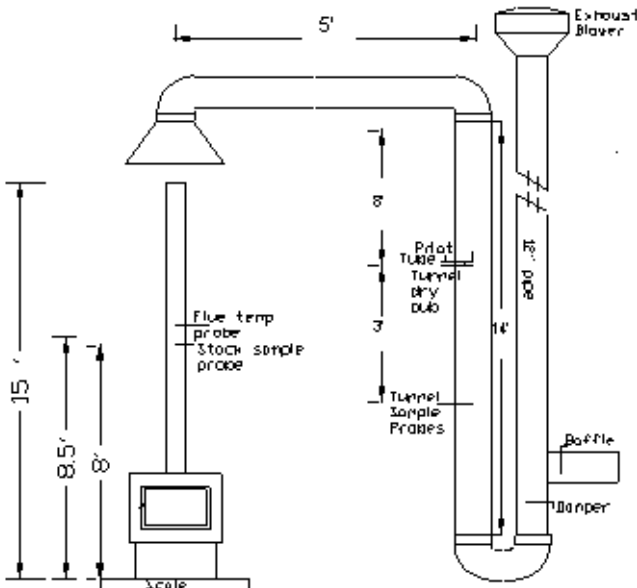


FIGURE 1

IV.B. OPERATIONAL DRAWINGS

IV.B.(2). DILUTION TUNNEL SAMPLE SYSTEMS

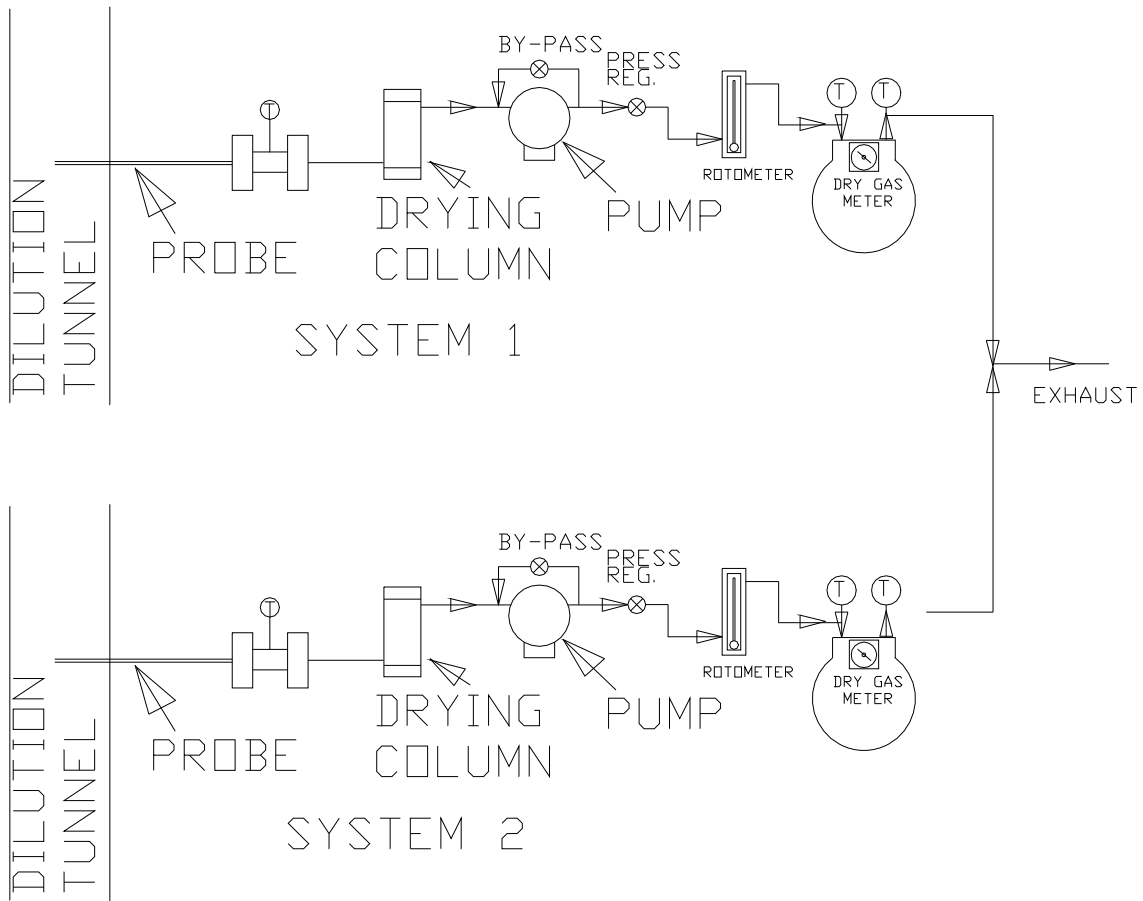


Figure 2

V. SAMPLING METHODS

V.A. PARTICULATE SAMPLING

Particulates were sampled in strict accordance with ASTM E2515-09. This method uses two identical sampling systems with Gelman A/E 61631 binder free, 47-mm diameter filters. The dryers used in the sample systems are filled with "Drierite" before each test run.

VI. QUALITY ASSURANCE

VI.A. INSTRUMENT CALIBRATION

VI.A. (1). DRY GAS METERS

At the conclusion of each test program the dry gas meters are checked against our standard dry gas meter. Three runs are made on each dry gas meter used during the test program. The average calibration factors obtained are then compared with the six-month calibration factor and, if within 5%, the six-month factor is used to calculate standard volumes. Results of this calibration are contained in Appendix D.

An integral part of the post test calibration procedure is a leak check of the pressure side by plugging the system exhaust and pressurizing the system to 10" W.C. The system is judged to be leak free if it retains the pressure for at least 10 minutes.

The standard dry gas meter is calibrated every 6 months using a Spirometer designed by the EPA Emissions Measurement Branch. The process involves sampling the train operation for 1 cubic foot of volume. With readings made to .001 ft³, the resolution is .1%, giving an accuracy higher than the $\pm 2\%$ required by the standard.

VI.A.(2). STACK SAMPLE ROTOMETER

The stack sample rotometer is checked by running three tests at each flow rate used during the test program. The flow rate is checked by running the rotometer in series with one of the dry gas meters for 10 minutes with the rotometer at a constant setting. The dry gas meter volume measured is then corrected to standard temperature and pressure conditions. The flow rate determined is then used to calculate actual sampled volumes.

VI.B. TEST METHOD PROCEDURES

VI.B.(1). LEAK CHECK PROCEDURES

Before and after each test, each sample train is tested for leaks. Leakage rates are measured and must not exceed 0.02 CFM or 4% of the sampling rate. Leak checks are performed checking the entire sampling train, not just the dry gas meters. Pre-test and post-test leak checks are conducted with a vacuum of 10 inches of mercury. Vacuum is monitored during each test and the highest vacuum reached is then used for the post test vacuum value. If leakage limits are not met, the test run is rejected. During, these tests the vacuum was typically less than 2 inches of mercury. Thus, leakage rates reported are expected to be much higher than actual leakage during the tests.

VI.B.(2). TUNNEL VELOCITY/FLOW MEASUREMENT

The tunnel velocity is calculated from a center point Pitot tube signal multiplied by an adjustment factor. This factor is determined by a traverse of the tunnel as prescribed in EPA Method 1. Final tunnel velocities and flow rates are calculated from EPA Method 2, Equation 6.9 and 6.10. (Tunnel cross sectional area is the average from both lines of traverse.)

Pitot tubes are cleaned before each test and leak checks are conducted after each test.

VI.B.(3). PM SAMPLING PROPORTIONALITY (5G-3)

Proportionality was calculated in accordance with EPA Method 5G-3. The data and results are included in Appendix C.

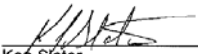
VII RESULTS AND OBSERVATIONS

The Model WHS2000 has been found to be in compliance with the applicable performance and construction requirements of the following criteria:

“Appendix X1 Modified test method for wood-fired hydronic appliances that utilize thermal storage of ASTM E2618-09 Measurement of particulate emissions and heating efficiency of outdoor solid fuel-fired hydronic heating appliances”

The model WHS2000V was the model tested, which is configured with a vertical flue located at the top back of the unit. Model WHS2000H is an identical model with the only difference being that the flue exits horizontally out the back of the unit. The model WHS2000H does contain slightly more water in the vessel due to the flue area is not notched out for the vertical flue exit.

INTERTEK TESTING SERVICES NA

Evaluated by: 
Ken Slater
Associate Engineer - Hearth

Reviewed by: 
Brian Ziegler
Engineering Team Leader - Hearth